



Energy efficiency

House should last for generations. Therefore it make sense that from very beginning you make your house maximum energy efficient, by that on long term bases you ensure much lower costs and much better dwelling comfort.

Heating price has drastically grown in recent years; forecast says it will continue to grow. If you chose Krivaja low energy house you will be able to keep energy costs under control and by that be less vulnerable to future energy price fluctuations.

Healthy interior climate

Krivaja low energy house has significantly better interior climate than traditional house. Health interior climate is of great importance since we spend 85% of our lives in closed rooms and system of natural ventilation reduces risks of allergies to minimum level. Our construction system enables minimal changes and constant temperature in the whole house, fresh in summer and constant warm in all rooms even when there is deep snow outside.

Sound insulation

Our construction system is not only improving energy efficiency, but efficiently blocks unwanted exterior sounds which could have negative impact to yor sleep and overall living comfort.

Environment protection

Healthy interior climate is very important. Equally important is global environment, by choosing of Krivaja low energy house you can "kill to b birds with one stone". Buildings in Europe are responsible for more than 40% of energy consumption in EU, only dwelling sector for about 25%. Building of energy efficient house will help reduce our emission of CO2 and help fight climate changes.



YOUNG.053

53 m²
GROSS

45 m²
NET

2
ROOMS

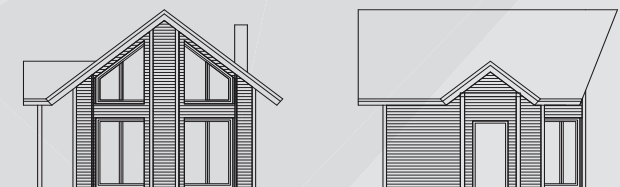
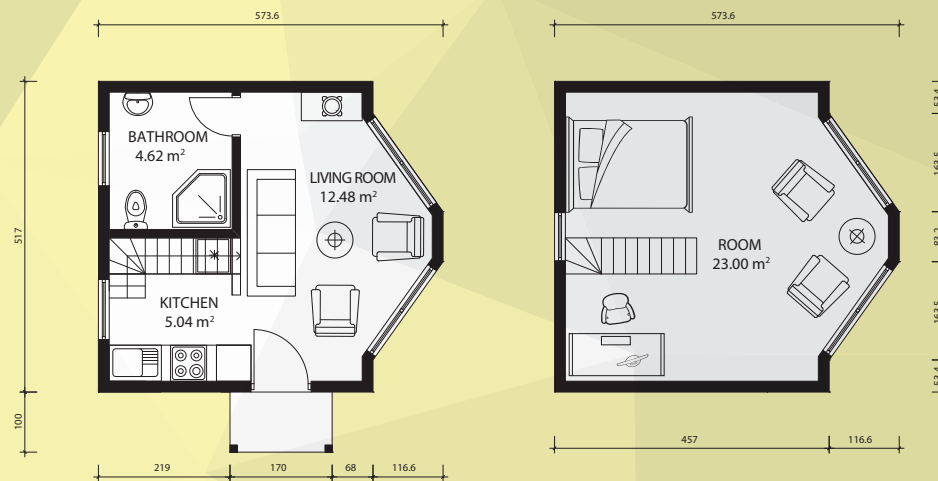
ENERGY
CLASS

B



This extraordinary light and elegant weekend house does not leave anybody indifferent. Large glass screens provide direct connection with nature and give special airiness and flair to interior. Comfortable bathroom, intimate kitchen and spacious bedroom will simply force you to extend your weekends.

Solid wood kitchen extend warmth and romance, and give your home "old fashion" atmosphere. Noble impression of wood gives to kitchen, along with elegant shapes, impression of real luxury of home which is especially visible in smaller, more intimate kitchens.





YOUNG.071

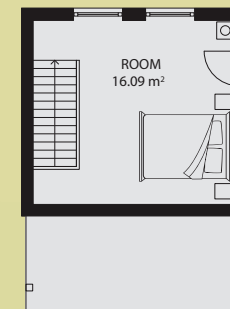
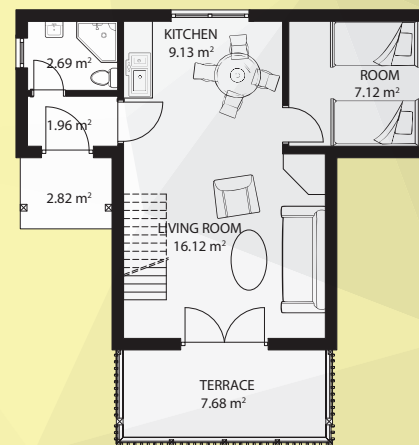
71 m²
GROSS

53 m²
NET

3
ROOMS

ENERGY
CLASS

B



Combination of exceptionally efficient design, great usage of space and natural warmth of wood make this charming weekend house ideal place for rest and escape from everyday obligations. Two bedrooms, open living room, roofed terrace and lots of light, just skies are missing.





YOUNG.112

112 m²
GROSS

101 m²
NET

4
ROOMS

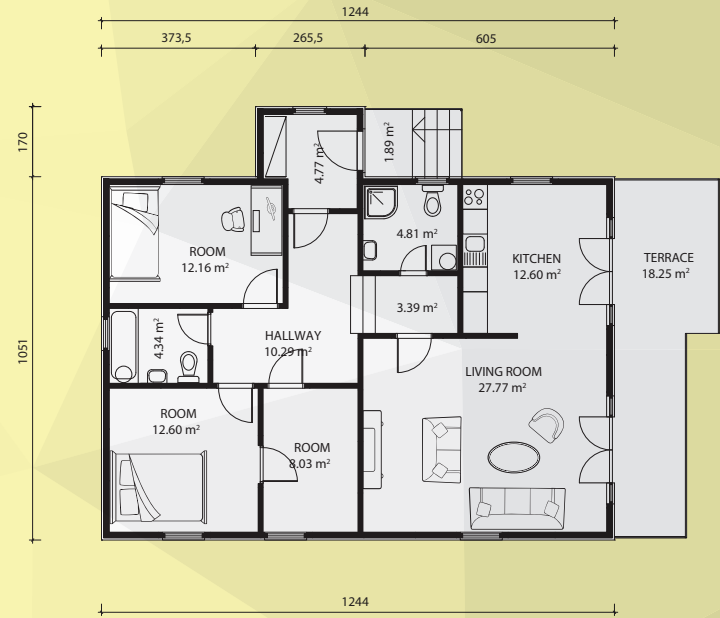
ENERGY
CLASS

B



Ideal size of dwelling space intended for one modern family of contemporary and delicate taste. Interior is designed in such a way to secure absolute comfort and functionality to your family. Three bedrooms and open in light bathed living room will make it sure.

Small rooms can look even smaller because of dark window frames and massive curtains which "choke" the room and draw attention to the window instead of just discrete decoration. By selection of lighter and transparent curtains and lighter window frames you will enable light to spread in the room.





YOUNG.113

113 m²
GROSS

84 m²
NET

4
ROOMS

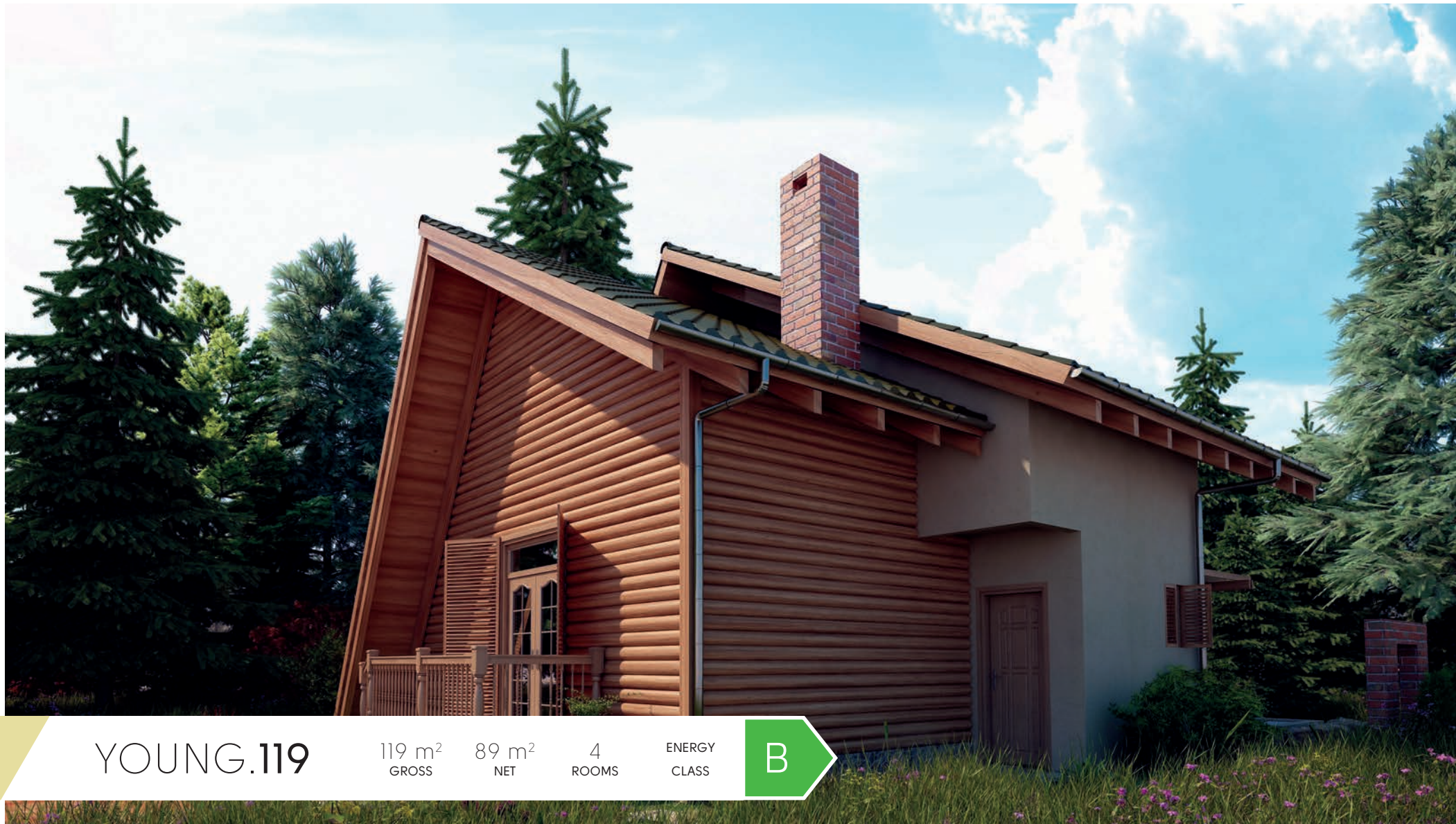
ENERGY
CLASS

B



Designed by the principles of Scandinavian design this house is ready to pass the test of time. Simple, clever design of interior and unobtrusive elegance of shapes guaranty imperishable charm to this extraordinary family house.





YOUNG.119

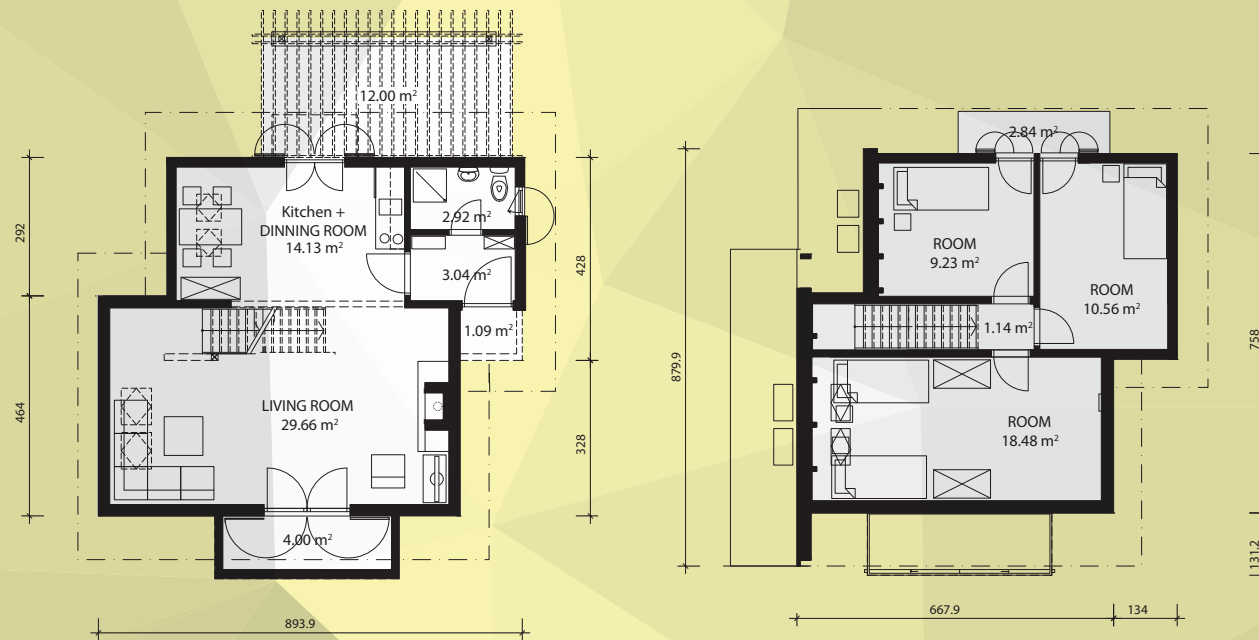
119 m²
GROSS

89 m²
NET

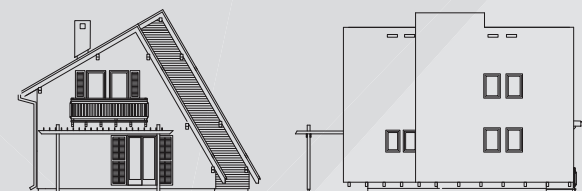
4
ROOMS

ENERGY
CLASS

B



This is with good reason our most popular weekend house. Ground floor is dominated by open living room with fire place as an ideal room for rest and entertainment. Three comfortable bedrooms secure comfort for your family and gests. Wonderful decoration to any mountain.





YOUNG.125

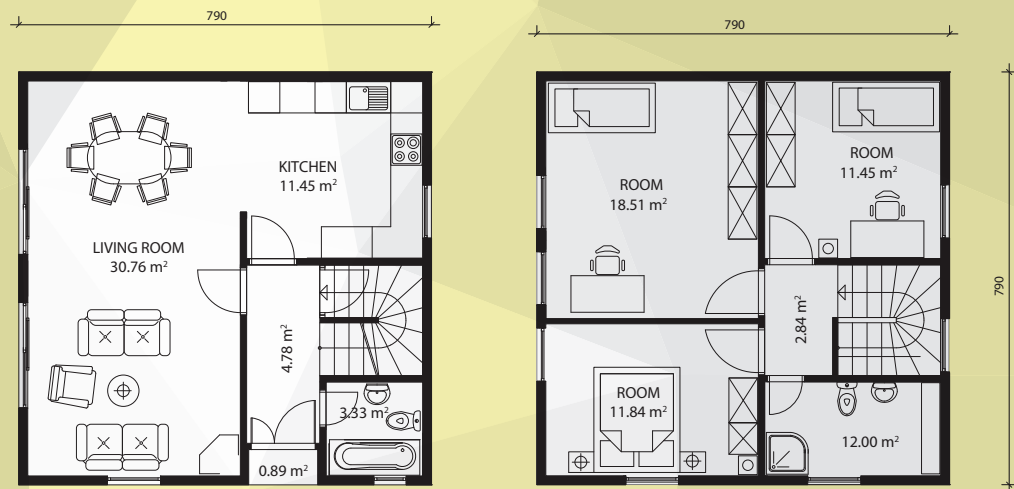
125 m²
GROSS

89 m²
NET

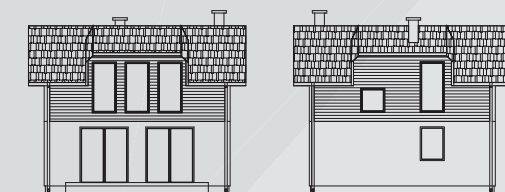
4
ROOMS

ENERGY
CLASS

B



Exceptionally nice dwelling object with impressive large windows which provide interior with needed transparency. Interesting combination of wooden and stucco façade give exterior special charm and character. Optical contact towards entrance part, living room and dining room give feeling of immense space. Living room is carefully conceived so every part is nicely lit with natural light which gives to room note of openness and airiness.





YOUNG.126

126 m²
GROSS

92 m²
NET

5
ROOMS

ENERGY
CLASS

B



One storey family house that exude elegance of modern way of living. Special Flair to house gives the roof which covers whole terrace and make exterior and interior one connected space. Interior of this marvelous house promises even more while with its optimally designed rooms allow big family to accommodate extremely comfortably inside its walls.





YOUNG.142

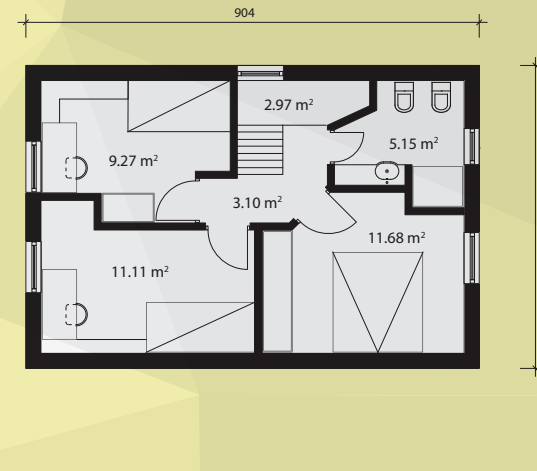
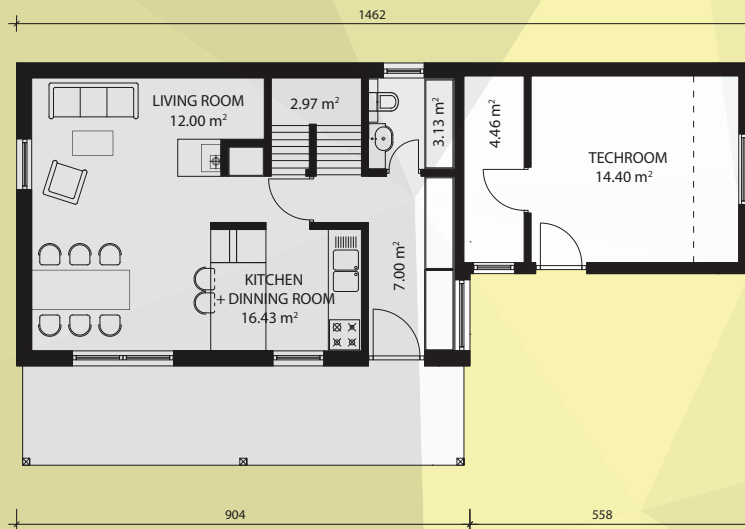
142 m²
GROSS

104 m²
NET

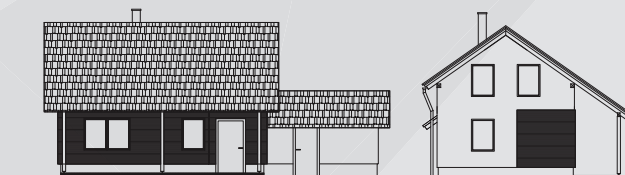
4
ROOMS

ENERGY
CLASS

B



Charming and functional family house will provide to your and your family warmth of home and esthetic of contemporary construction styles. All rooms are functionally optimal, so with the arrangement you will not have problem of achieving exactly the effect you always wanted.





YOUNG.152

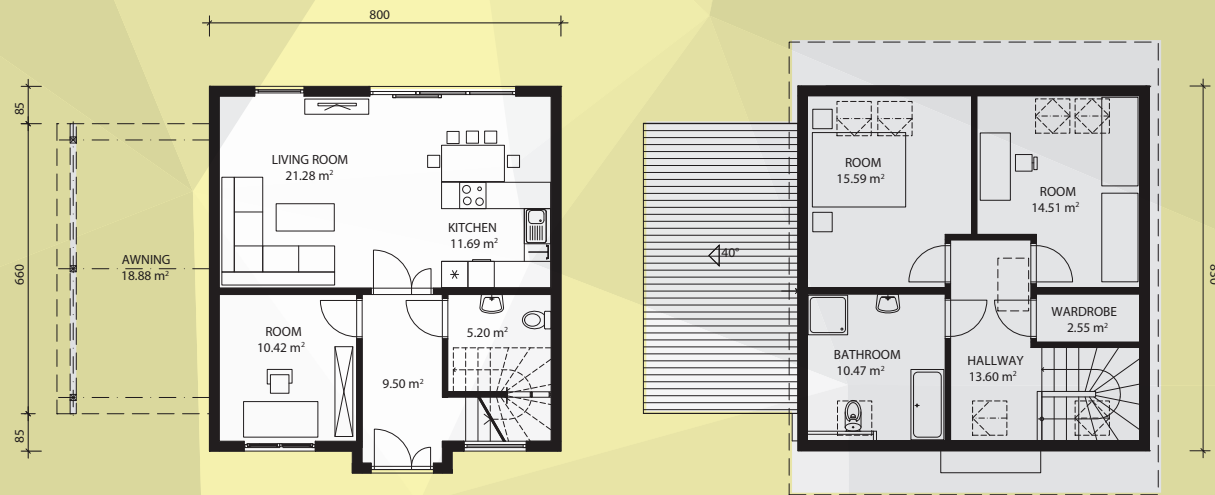
152 m²
GROSS

110 m²
NET

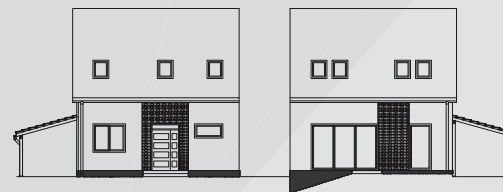
5
ROOMS

ENERGY
CLASS

B



This, at first sight classic house abound in modern solutions like absolute optimization of room, large glass surfaces, modern roof windows and separate wardrobe room. Especially suitable for young couples and families and all those who plan to move from flat to their own "piece of land".





YOUNG.153

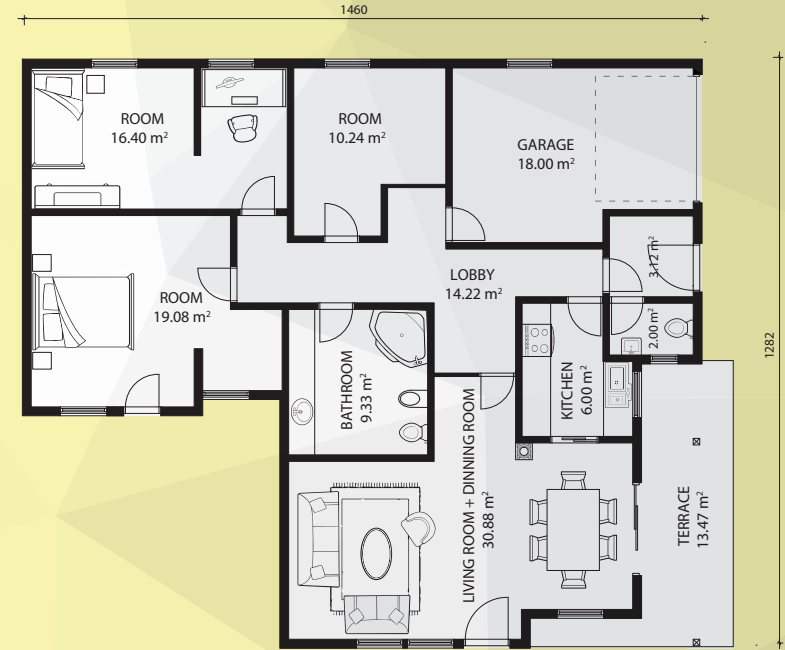
153 m²
GROSS

129 m²
NET

4
ROOMS

ENERGY
CLASS

B



House which central rooms are bathed with sun. Isn't it a dream of all of us? If with that we get ideally set room for harmonic life of one family then who needs more that this beautiful house.

Properly set bedroom can have great influence on how you sleep. For pleasant and peaceful dream it is recommended to use pastel colours which shading enables creation of pleasant and playful interiors. These colours are gladly seen on walls, furniture, carpets and other elements of room. Depending on sensibility and taste, nuances of these colours can find their place in all parts of house.





YOUNG.154

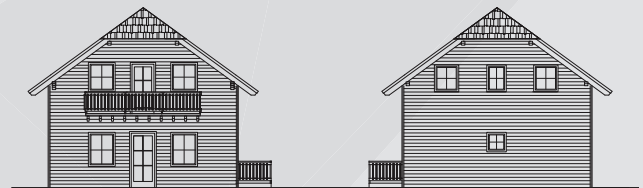
154 m²
GROSS

103 m²
NET

6
ROOMS

ENERGY
CLASS

B





YOUNG.183

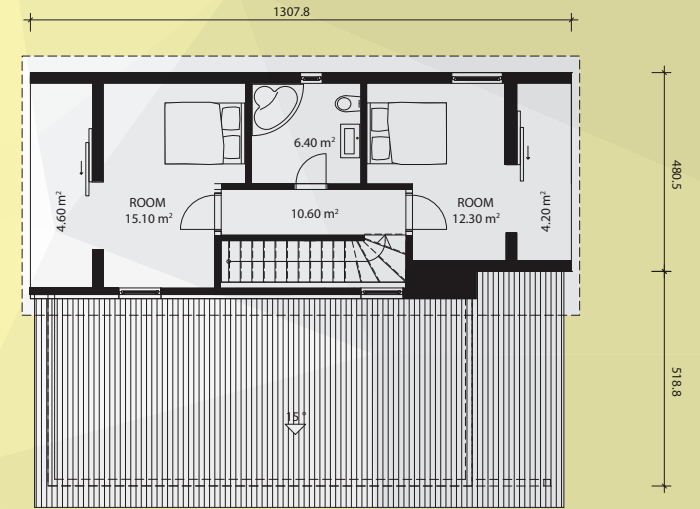
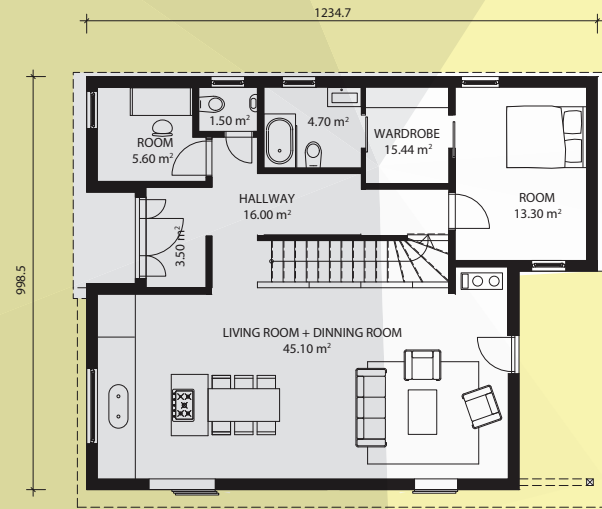
183 m²
GROSS

137 m²
NET

4
ROOMS

ENERGY
CLASS

B



This modern and above all different house presents exceptional dwelling solution for each family. Right wing of the house unites modern living style of open plan with large central room which includes kitchen, dining room and living room. Left wing has two stories intimate functional part with three bedrooms and study, bathrooms and other premises which belong to one modern dwelling object.





FAMILY.156

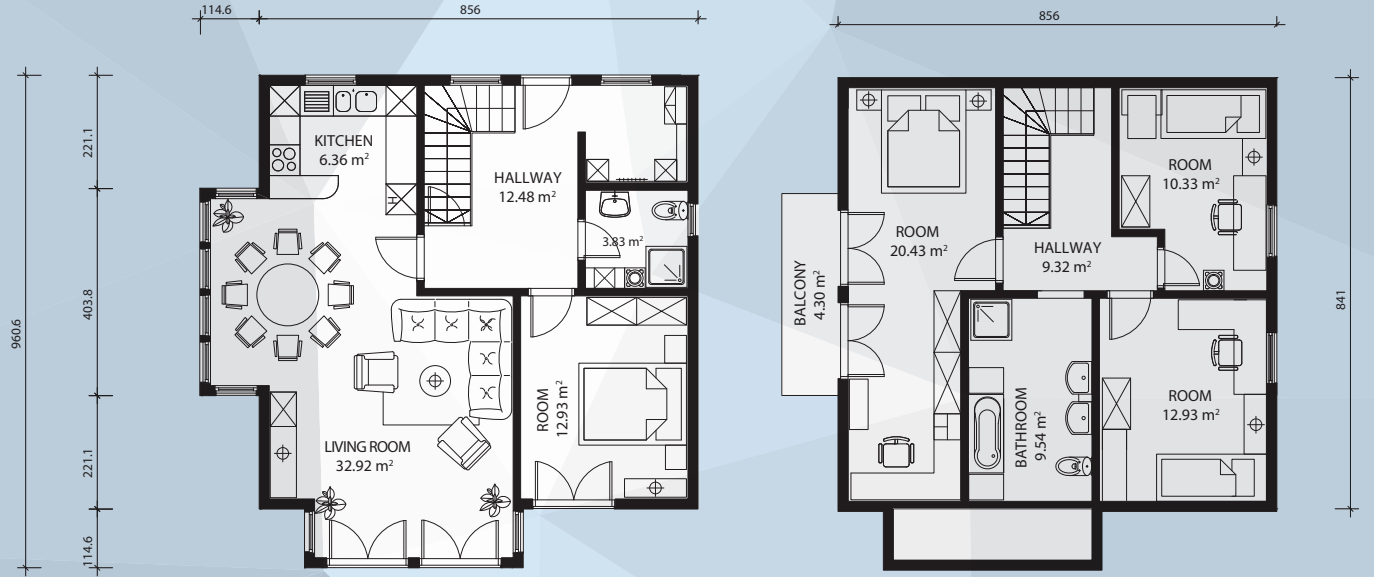
156 m²
GROSS

131 m²
NET

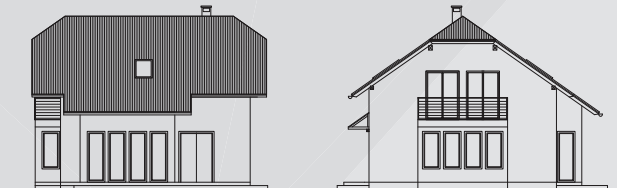
5
ROOMS

ENERGY
CLASS





This wonderful two storey house presents evolution of classic house. All is here: spacious living room, four bedrooms and two bathrooms are just upgrade3d with more light, more room and more luxury.





FAMILY.158

158 m²
GROSS

128 m²
NET

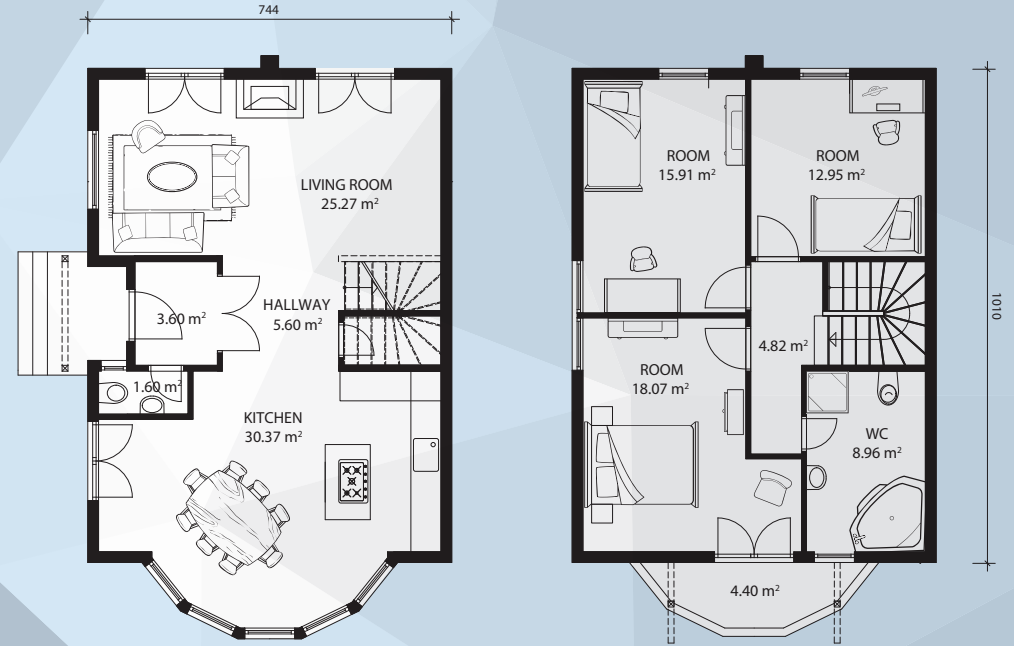
4
ROOMS

ENERGY
CLASS

B



You must admit that it is very easy to imagine happy life in this simply fabulous house. Spacious living room with big fire place and magic dining room will absolutely enchant every guest. Your home is your castle, three bedrooms and big bathroom are your chambers.





FAMILY.160

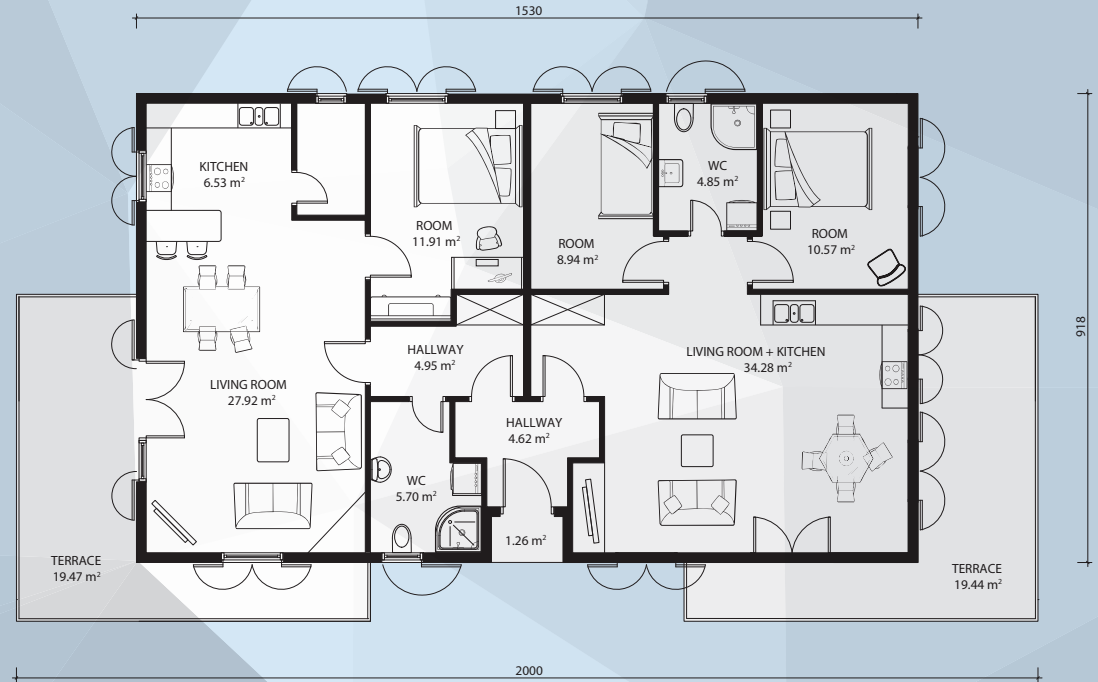
160 m²
GROSS

123 m²
NET

5
ROOMS

ENERGY
CLASS

B



When two families live under the same roof it is especially important to pay attention to individual demands. That is one of the most important tasks for architect-to find most optimal solution for all sides. It is self understandable that by doing that one must think on functionality and attractive exterior. This conceived semi detached house obviously shows one perfect solution for urban life. If we look at interior setup it is clear that interior of each dwelling unit is used in completely optimal way.





FAMILY.161

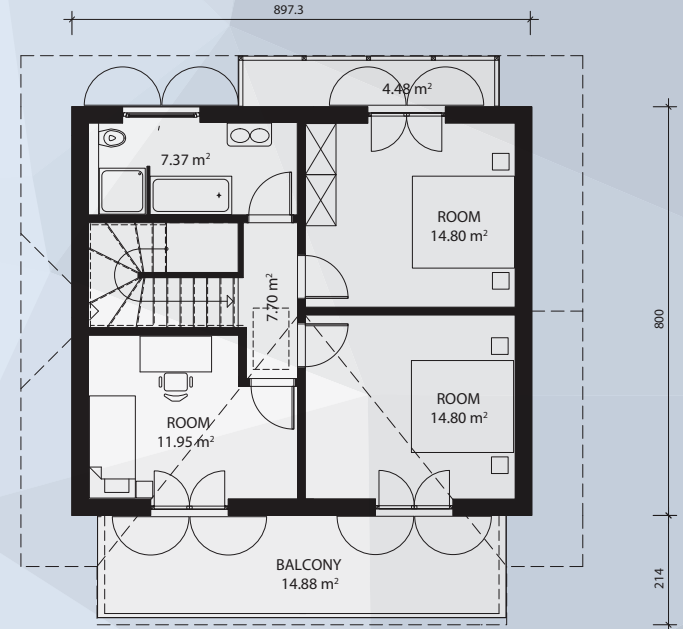
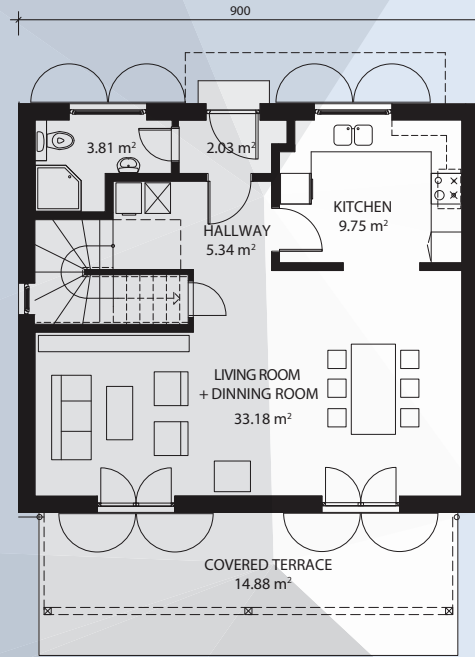
161 m²
GROSS

103 m²
NET

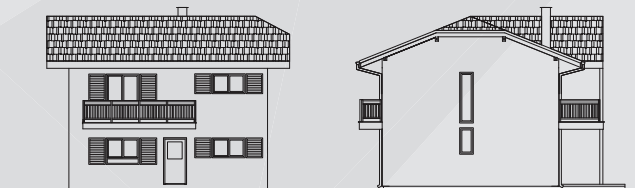
4
ROOMS

ENERGY
CLASS

B



House which attracts with extraordinary warmth not only from inside but from outside too, from the first moment gives you feeling that you made right decision. Spaciousness and light are provided by modern open concept of living room and dining room with kitchen which additionally creates feeling of space vastness. Ace of this house is beautiful wooden terrace which will simply force you to socializing and rest.





FAMILY.163

163 m²
GROSS

130 m²
NET

4
ROOMS

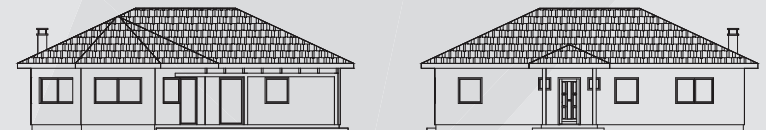
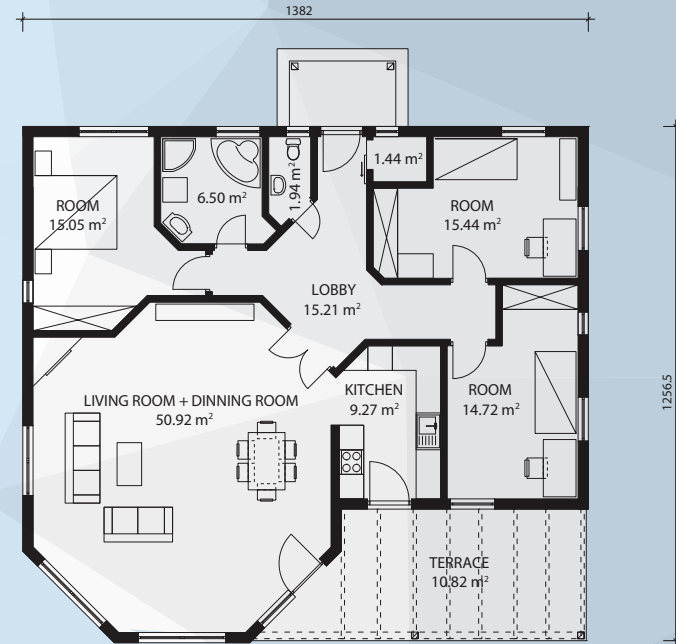
ENERGY
CLASS

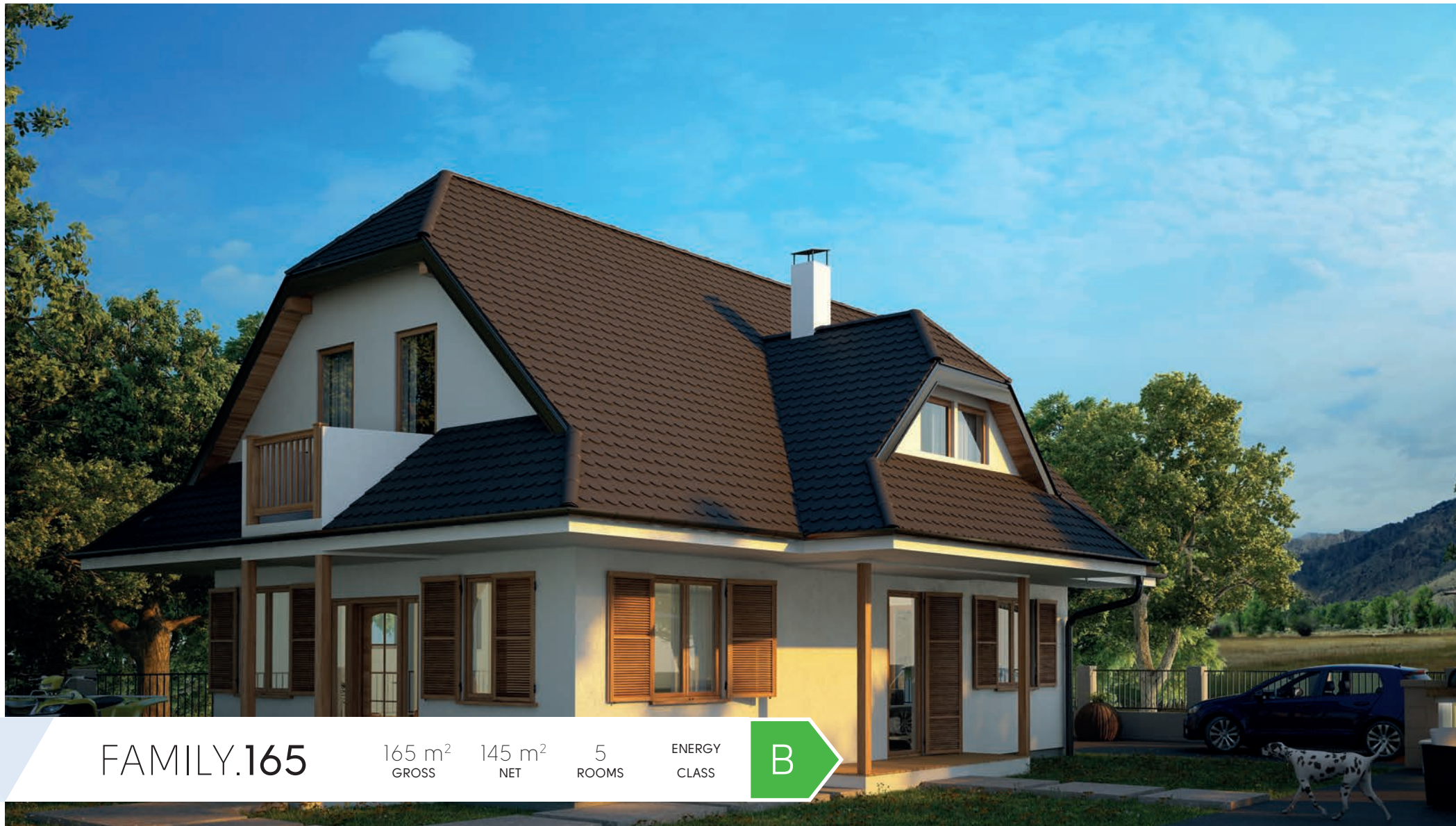
B



Fun of decent comfort will be delighted with this Mediterranean villa which ambient and charm are simply suitable in every sense; tent like roof, nicely set dwelling surfaces, roofed place for seating; all this gives to the whole concept look of elegant liveliness.

Wooden pergola is marvelous garden element which makes façade of every house more beautiful with its natural Mediterranean charm and at the same time creates perfect room for summer relaxation and activities.





FAMILY.165

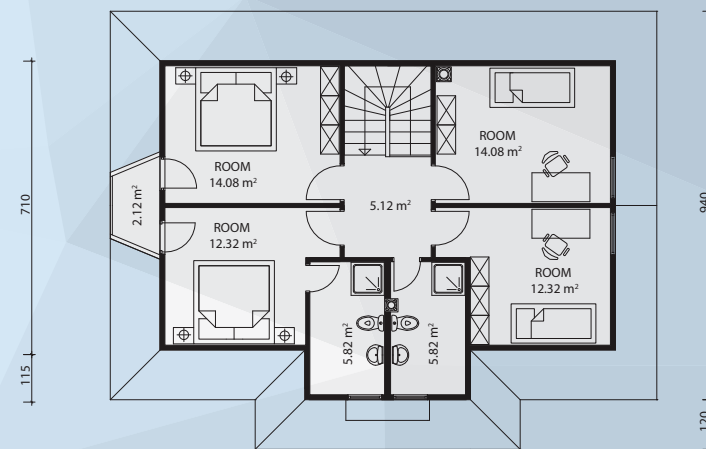
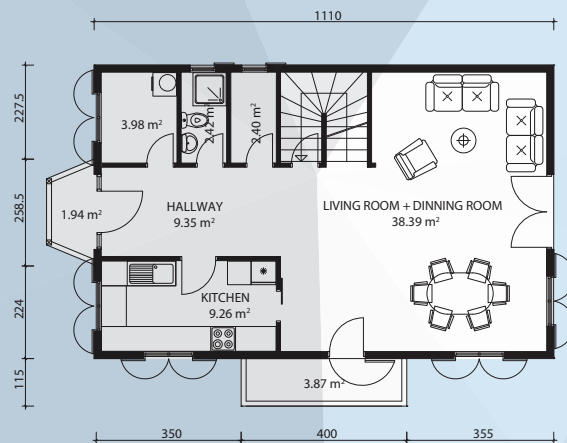
165 m²
GROSS

145 m²
NET

5
ROOMS

ENERGY
CLASS

B



Wooden window shutters give classic, irresistible charm to every façade. In all seasons Krivaja wooden window shutters provide additional protection of sun light and make working environment more pleasant, at the same time providing additional layer of insulation and protection in winter time.





FAMILY.167

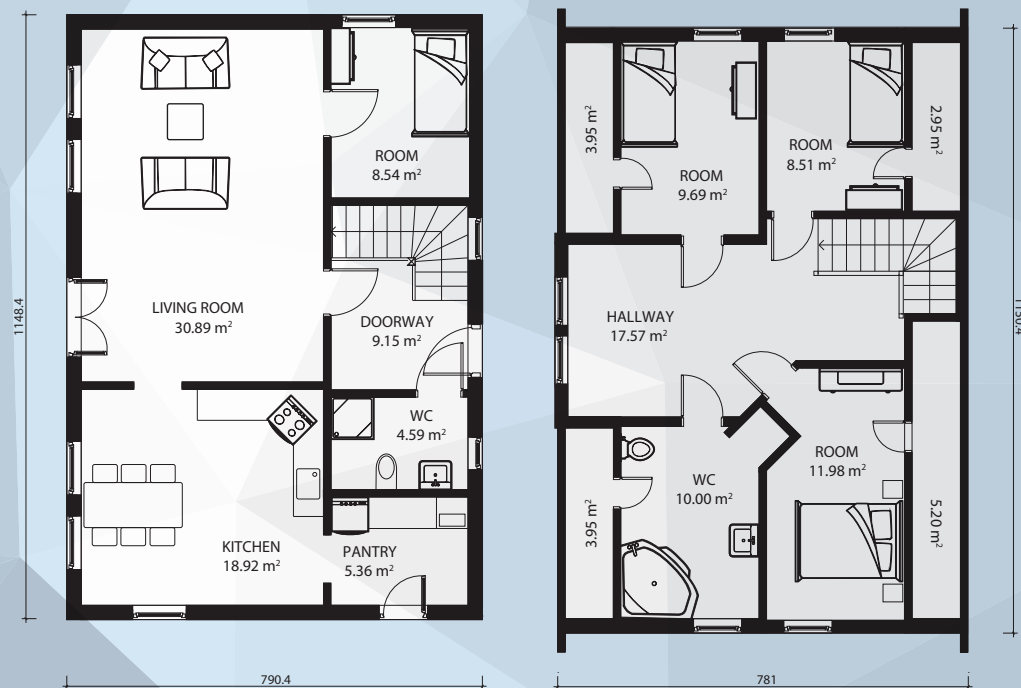
167 m²
GROSS

135 m²
NET

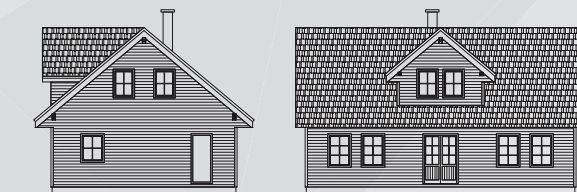
4
ROOMS

ENERGY
CLASS





Swedish beauty of ideal proportions, with elegant white wooden façade will, for sure intrigue every passer by. But only the chosen ones will have privilege to see the luxury of interior.





FAMILY.171

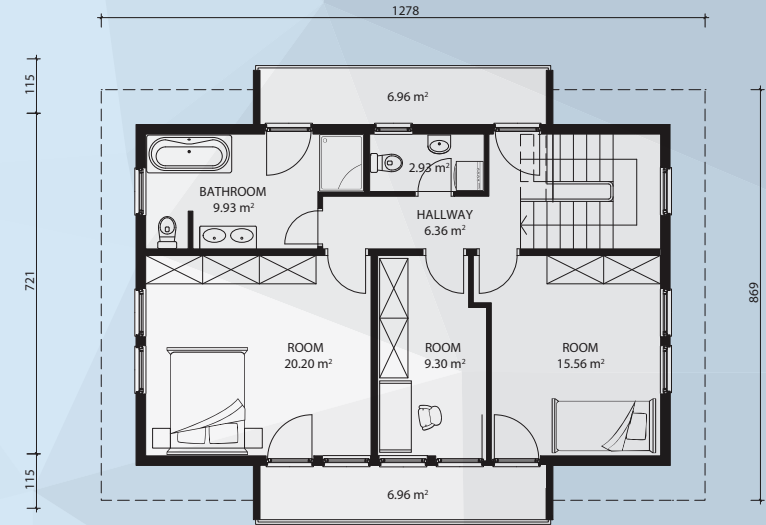
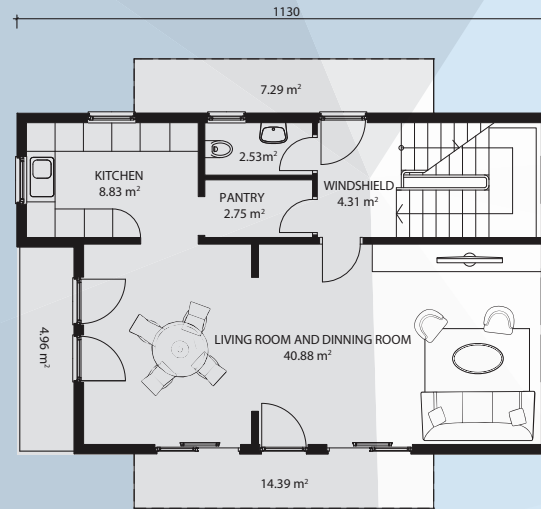
171 m²
GROSS

131 m²
NET

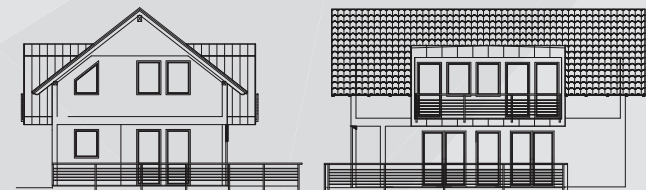
4
ROOMS

ENERGY
CLASS





Very representative and extremely comfortable family house with modern and imposing exterior. Ground floor is set in such a way which allows different variants of interior design and balconies and terraces give people feeling of space vastness and pleasant connection to environment.





FAMILY.182

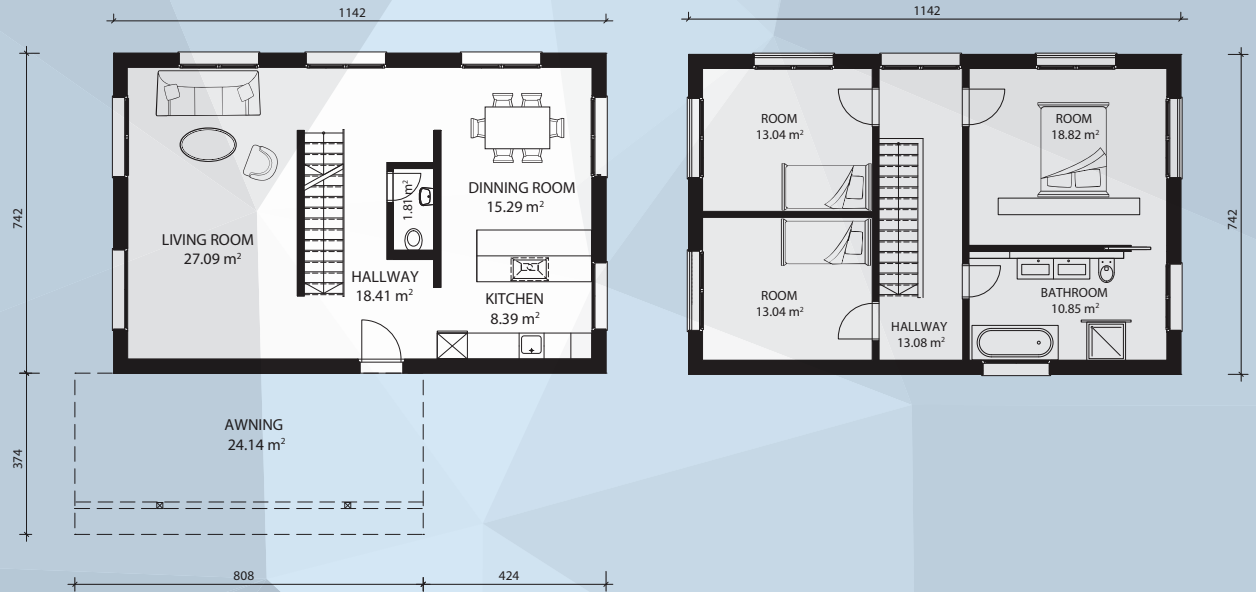
182 m²
GROSS

122 m²
NET

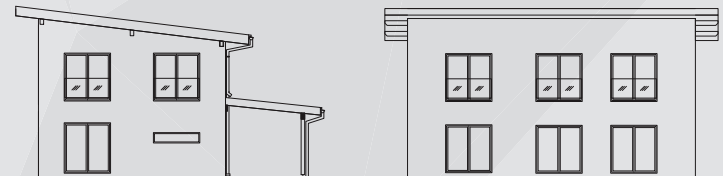
4
ROOMS

ENERGY
CLASS





Subtly simple, multi functional, energy efficient design of this house make it very clever choice. Glance over plan shows brilliance of room setup guaranteeing perfect comfort to whole family. Special attention should be paid to extraordinary energy efficiency of this object.





FAMILY.212

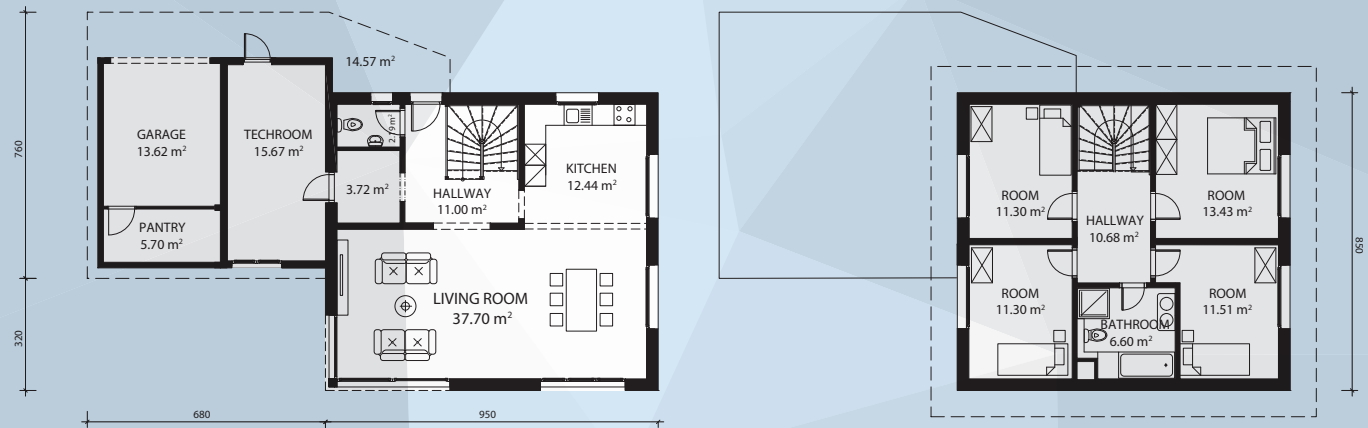
212 m²
GROSS

162 m²
NET

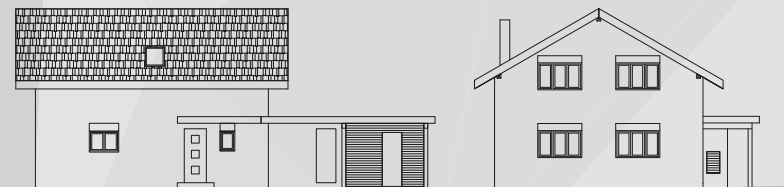
5
ROOMS

ENERGY
CLASS





This beautiful house unites classic beauty and contemporary architectural solutions aiming to meet esthetic and modern living demands. It presents ideal dwelling solution for one modern family. Four bedrooms, large living room of open type, garage and handful of other architectural solutions will definitely fulfill requirements of every modern family.





FAMILY.295

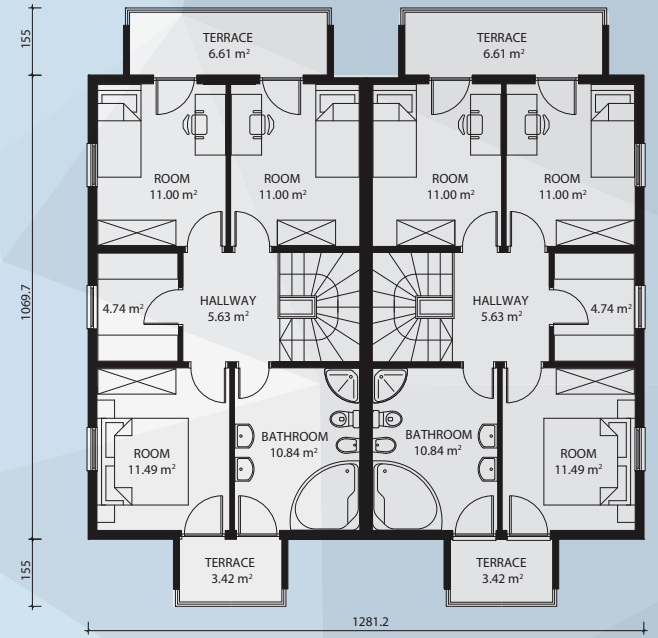
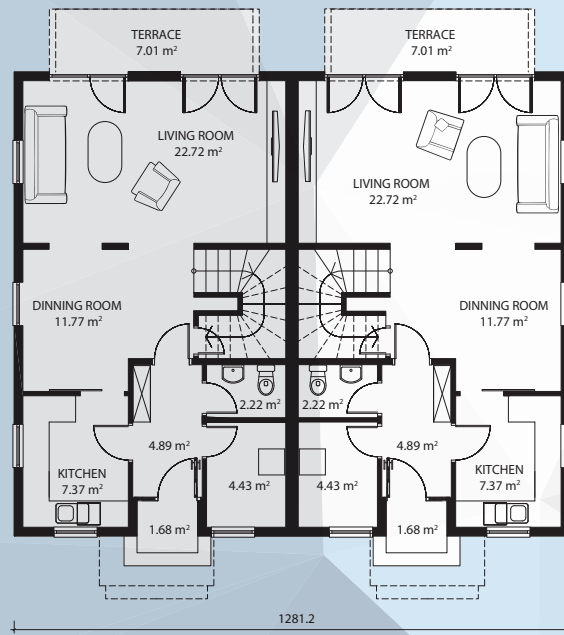
295 m²
GROSS

222 m²
NET

8
ROOMS

ENERGY
CLASS





One more architectural project worth admiring. Two storey hose, nicely structured with modern façade and high glass surfaces in the ground floor. Here you see all flexibility of architectural magic, for it successfully integrated compact body of two objects into one. This solution is ideal for urban grounds, for it enables maximum use of ground along with ideal setup of interior.





LUXE.190

190 m² GROSS
156 m² NET

6 ROOMS

ENERGY CLASS

B





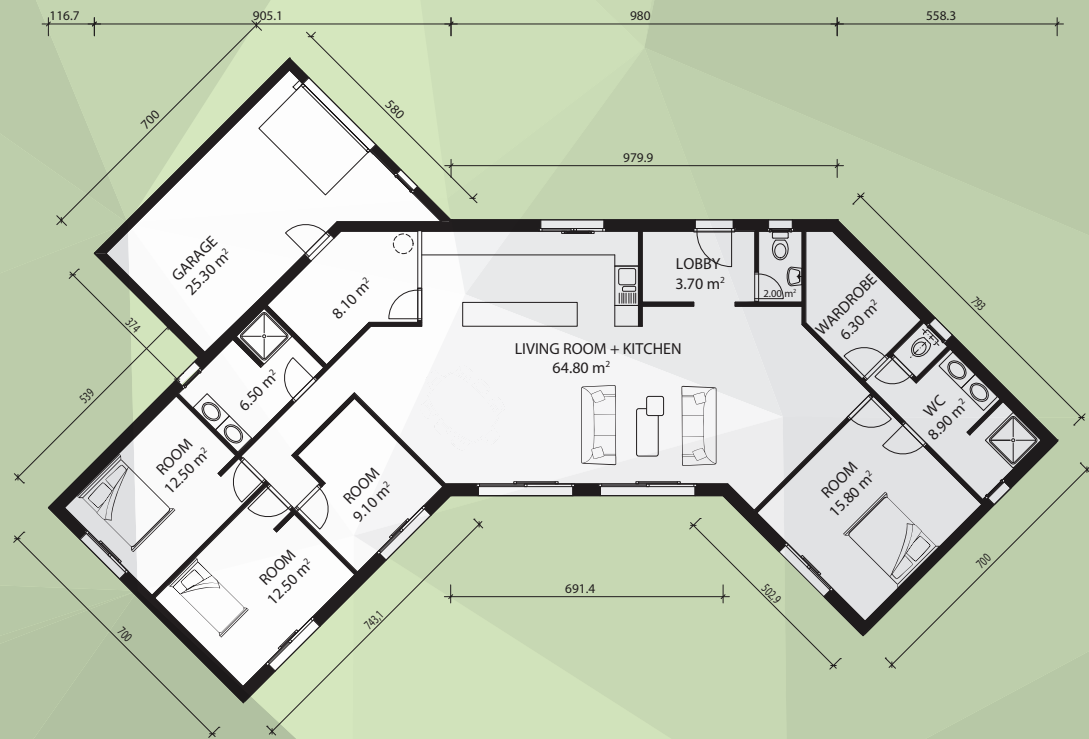
LUXE.204

204 m² 175 m²
GROSS NET

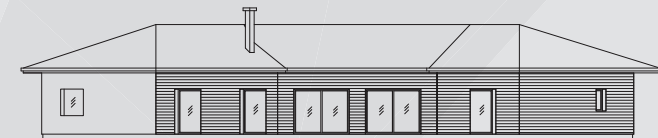
5
ROOMS

ENERGY
CLASS





This incredible single storey house requires large ground for construction but offers incomparable comfort and quality of dwelling. Great living room lit through big glass screens will leave everybody breathless. Five bedrooms, wardrobe and garage are just a part of rich interior of this really exceptional house.





LUXE.217

217 m²
GROSS

150 m²
NET

5
ROOMS

ENERGY
CLASS

A



Design of this really unique house was inspired by luxury penthouse apartments; with gallery, high ceiling I open living room and intimate terrace. Modern combination of wooden and stucco façade, large glass openings and smart energy efficient construction secures long and bright future of this house.





LUXE.226

226 m² 176 m²
GROSS NET

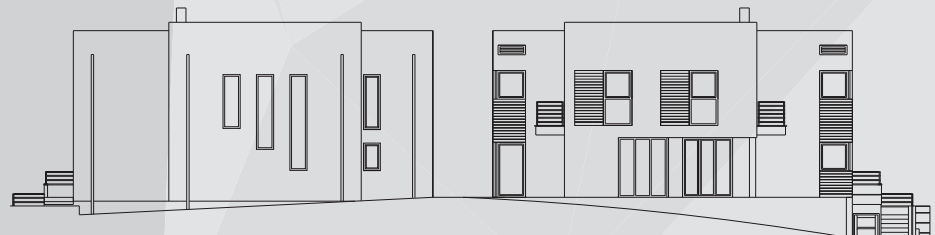
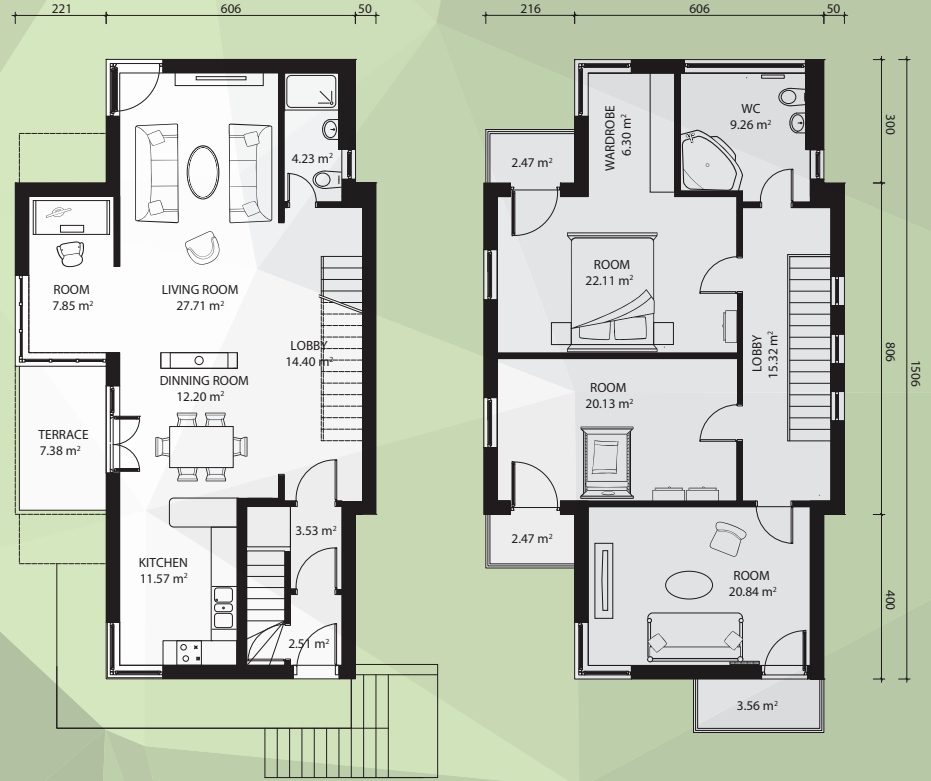
4
ROOMS

ENERGY
CLASS





Inspired with principles of Bauhaus design, this house presents concept for the future. Perfect symbiosis of form and function provides absolute comfort. At the same time, thanks to energy efficient principle of construction guarantees minimum energy consumption and healthy interior climate.





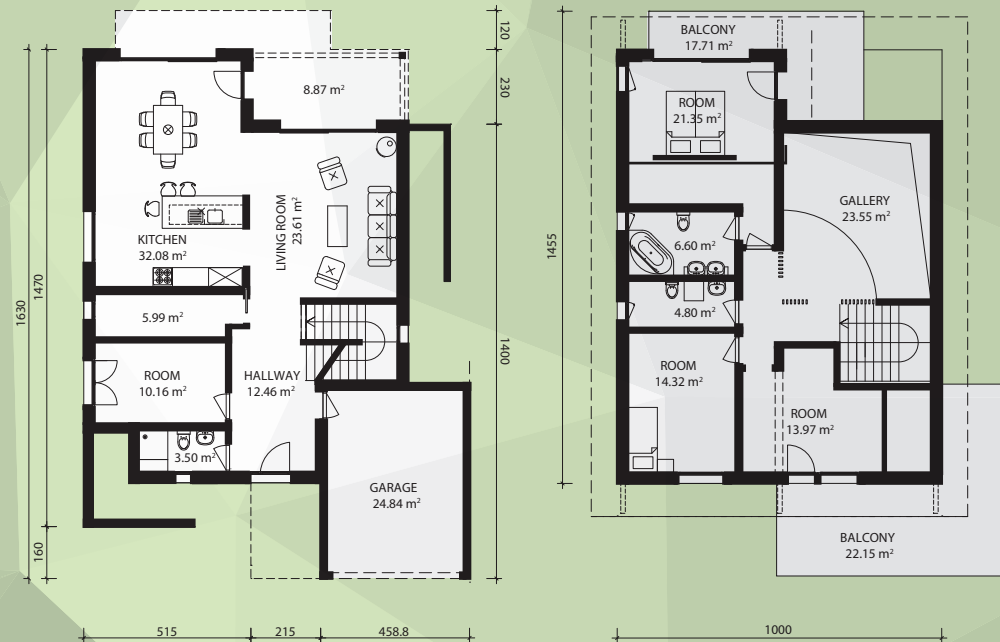
LUXE.256

256 m² GROSS
156 m² NET

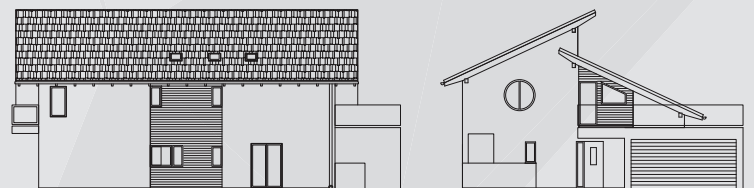
5
ROOMS

ENERGY
CLASS





Modern and attractive family house, designed in accordance with world trends on environment protection and energy saving, guarantees comfortable and healthy living style for its dwellers. Three bedrooms and study, garage and large living area provide more than enough room even for bigger families.





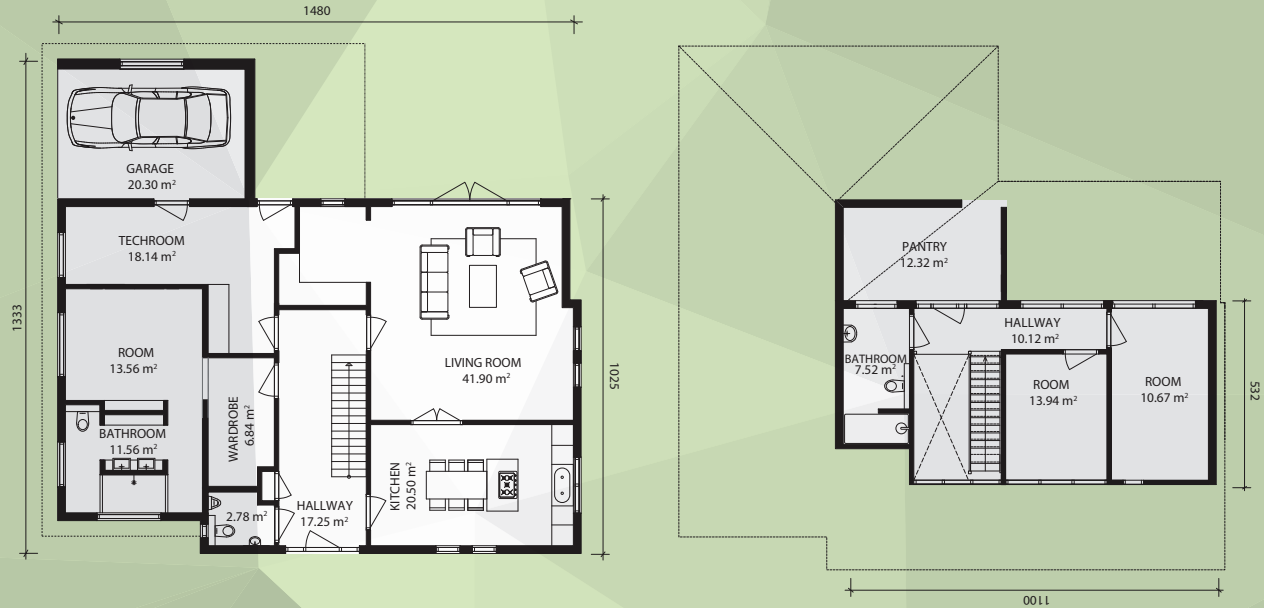
LUXE.258

258 m² GROSS
215 m² NET

4
ROOMS

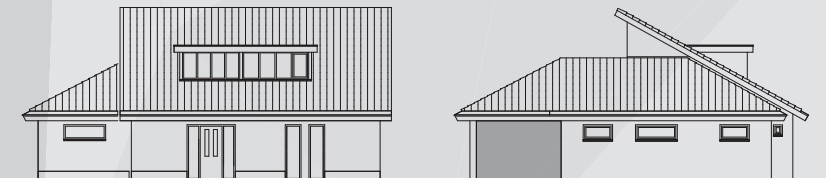
ENERGY
CLASS

A+



This representative low energy house is perfect choice for those who like comfort, functionality and modern architecture.

If a living room is hart of every home, then the kitchen is for sure its soul. Kitchen is not only the place where we prepare and consume different food; it is also place of gathering and connecting of family members who are throughout the day scattered taken by their obligations. For bigger kitchens especially suitable are working "islands" in the middle. Besides working surface they can also have stove and/or sink and dining table. For its universality they present most useful element in kitchens.





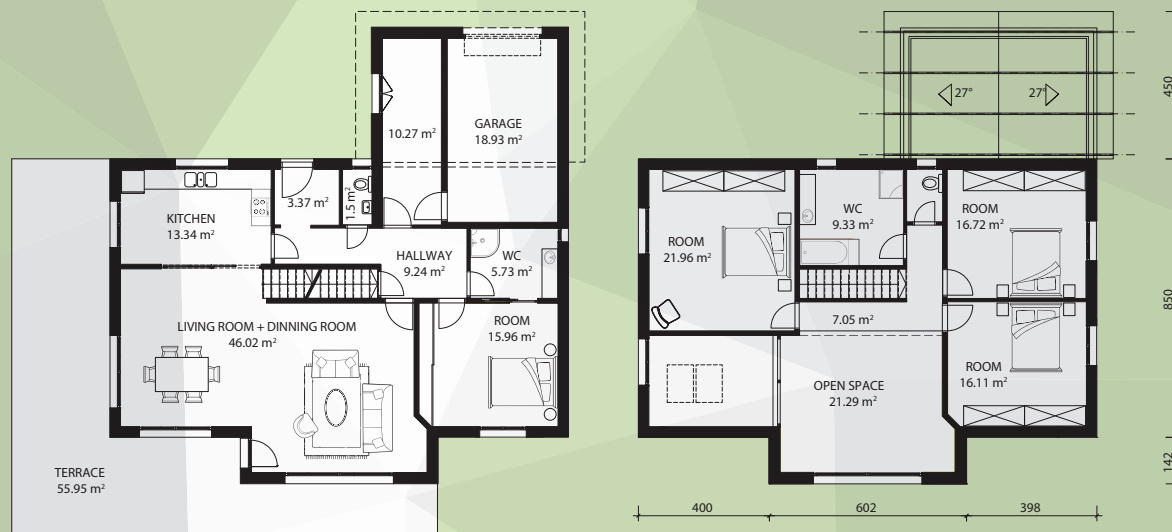
LUXE.279

279 m² GROSS 222 m² NET

5 ROOMS

ENERGY CLASS





Combination of wooden façade and large glass portals give special charm and warmth to this exceptionally representative house of magnificent exterior. Big living room with high ceiling will not make anybody indifferent. And even four specious bedrooms secure absolute comfort and good night to entire family.





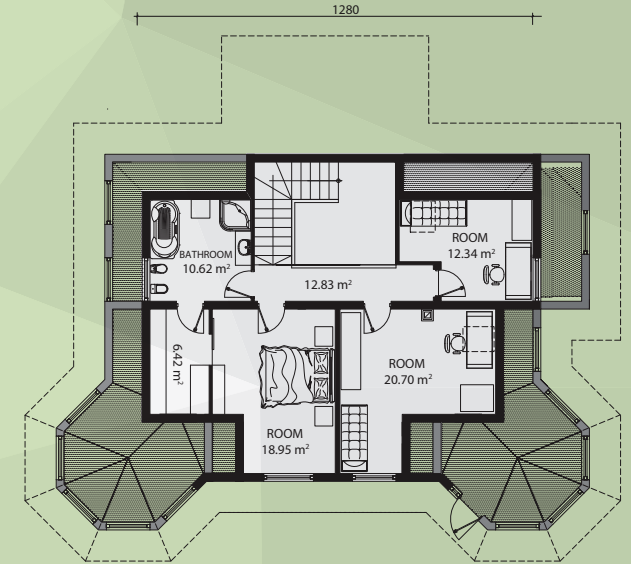
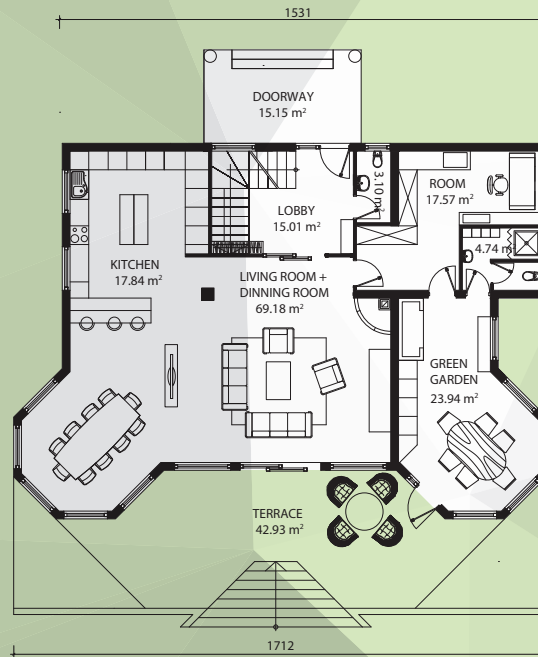
LUXE.288

288 m² GROSS 227 m² NET

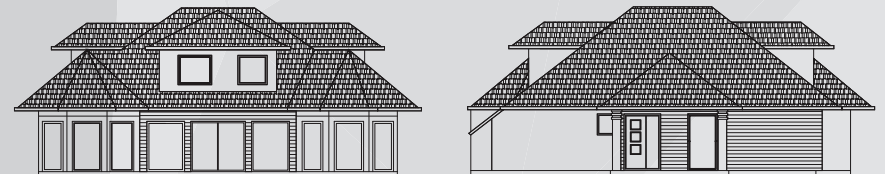
6 ROOMS

ENERGY CLASS





Although this villa will satisfy all your dwelling needs and even much more, that is not reason of its existence. It presents tangible sign of your success; all the rest is less relevant. Enjoy, you deserve it!





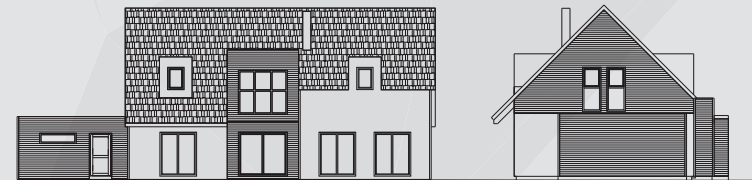
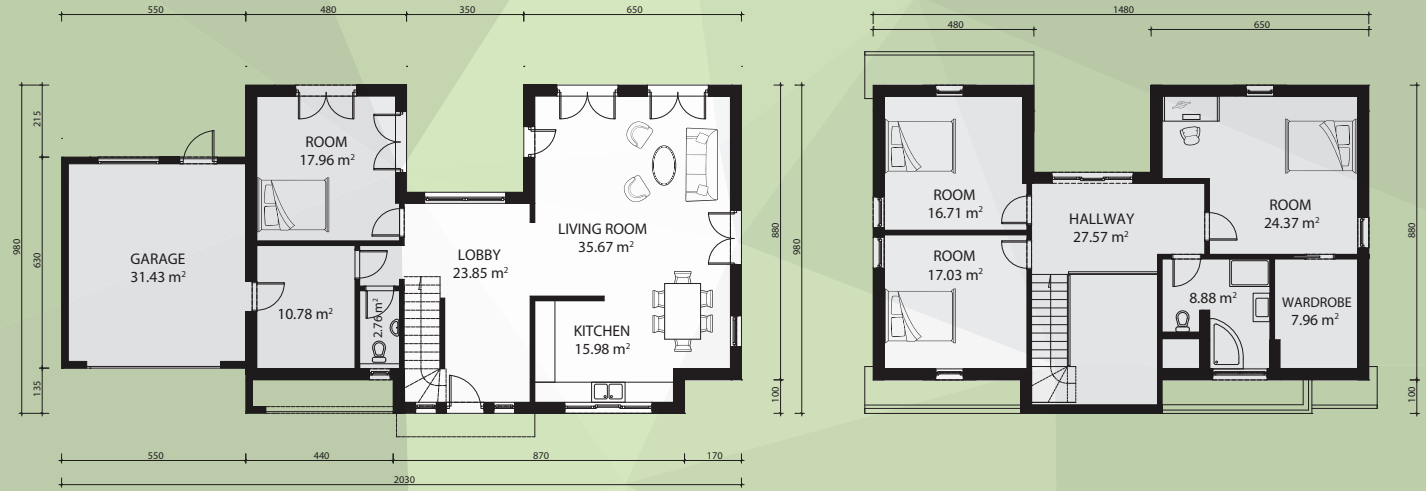
LUXE.289

289 m² GROSS 237 m² NET

5 ROOMS

ENERGY CLASS







LUXE.314

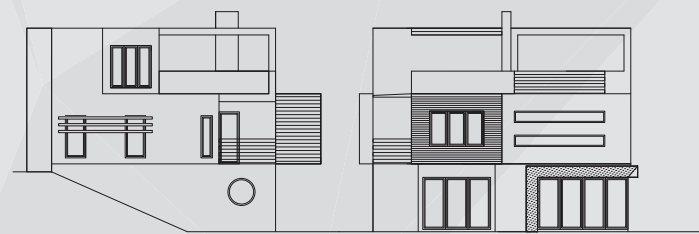
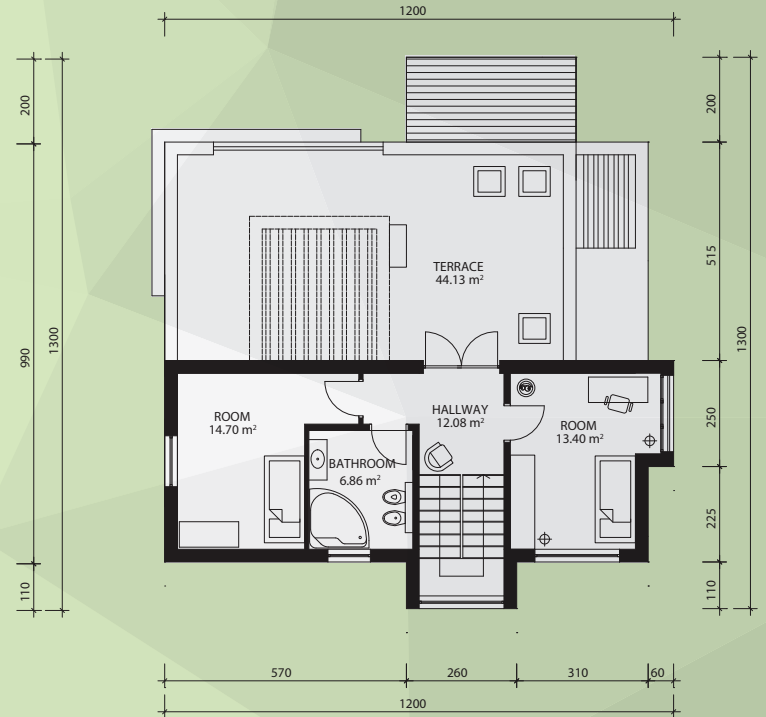
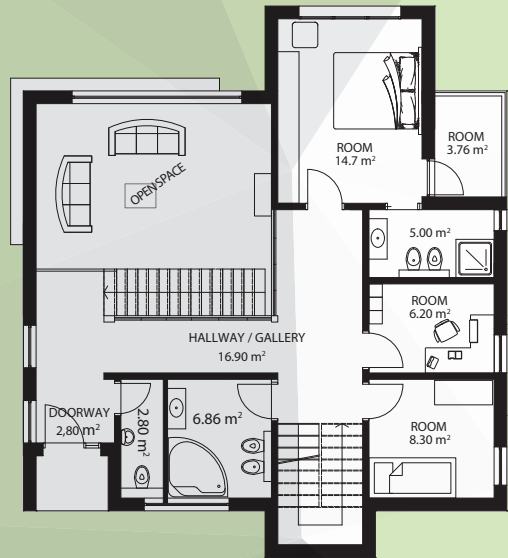
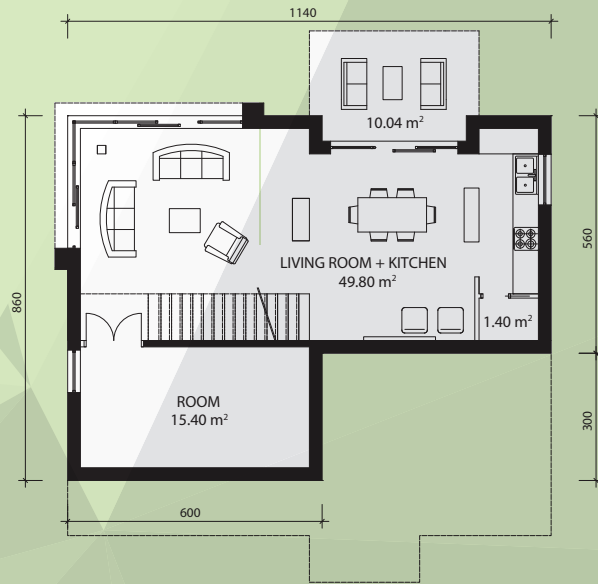
314 m²
GROSS

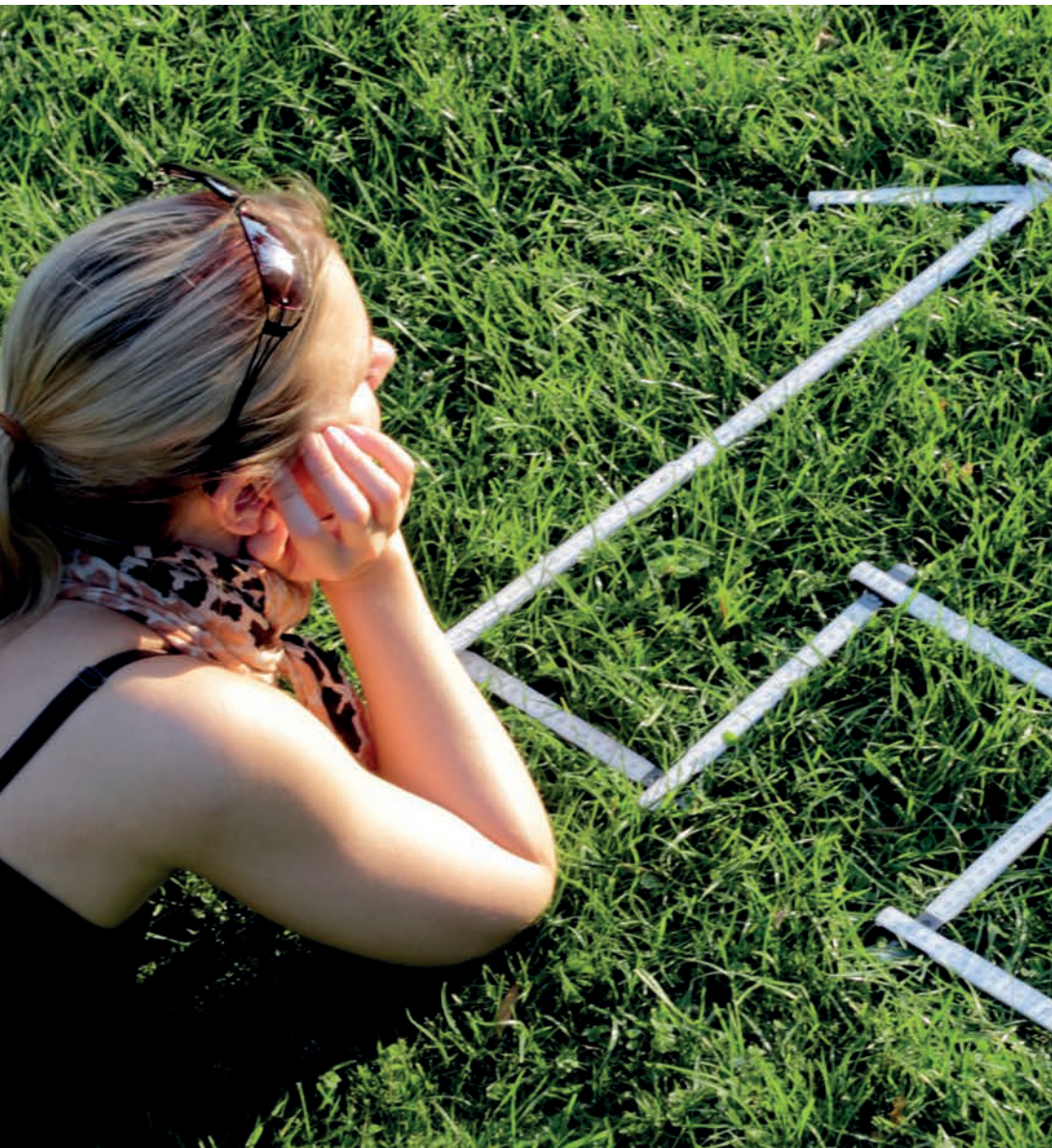
177 m²
NET

7
ROOMS

ENERGY
CLASS

A





Personally yours

Krivaja custom made houses are unique as you yourselves are, designed and produced to fit your living style. Either we work with your architect or our designer team, your wishes and visions are our key priority. Your dream house is within reach of hand why to accept anything else.

Incredibly fast

Krivaja construction system is incredibly fast. Mark your calendar, 40 days from signing the contract you will have completely new home! Assembling itself can be done in some days, pleasure of watching your new house magically rising in front of you in just some days is simply indescribable.

Excellent price

From the very beginning all materials and accessories are precisely defined and ordered before production itself which significantly reduces price of house and eliminate hidden and unplanned expenses. All expenses are agreed upon in advance so from the very beginning you will now final price of your house.

Precise construction

Krivaja construction system provides absolute precision, which completely overcome classic way of house construction. Our precision is possible because of use of modern technologies in climate controlled production conditions under supervision of experienced and highly qualified workers and engineers. Krivaja construction system not only overcomes performance of classic constructions but at the same time reduces material consumption, waste and significantly reduces harmful emissions.

Total support

Construction of new hose is priceless pleasure which can turn into stressful challenge, but with help of Krivaja engineering team you will get full support necessary for fulfillment of your wishes. Although in our 60 years of experience we had privilege to design and build superior objects - each new house is new exciting experience by which we improve our construction skills.

Key in 40 DAYS

Contact



During our first meeting we shall learn about your ideas and wishes. If you do not have already defined design our team of architects is ready to assist you.

Plan



Now when we know you better, our team of engineer can start with making of preliminary design. Of course, closely cooperating with you in order to be sure that all details are included. In the meantime study of expected costs will be prepared for you that will in this phase make it easier for you to take decision and match your vision, wishes and needs and frame them into your concrete budget limits.

Presentation



Our team will present proposal of design using all gathered information about your future home. Et the same time your own salesman will compose detail offer based on the study of expected costs and mutually agreed details for your future home. In this period we shall define remaining details, if necessary make additional adjustments and answer all questions.

Signature



After you are completely satisfied with preliminary solution and presented offer, we only need your approval and signature for the beginning of production of your dream house.

40 days



Mark you calendar, because -40 days from the date of signing the contract you will have completely new house. All magic happens in these -40 days, from production to assembling; your house will appear in front of you within some days.

Congratulations



Congratulations, we wish you happy and successful life in your new house! It was our pleasure to work for you.



FUTURA NATURA+

Windows

Perfect combination of natural materials and sophisticated technology. Krivaja energy efficient windows are not only nice part of nature but exceptionally precisely designed and produced part of contemporary technology.





Energy efficient

FUTURA 96 and NATURA+96 are our best windows when it comes to energy efficiency. Extremely low U- value of 0,7 W/m²K make them ideal windows for low energy houses. With option of Krypton glass and warm edge as standard features FUTURA and NTURA+ really present future in windows.

Custom made

Every window and balcony door is made in accordance with individual desires of customer, absolutely without compromise. Only so we can guaranty that you will get window which you need.

Quality fittings

For our windows only the best fittings are good enough, therefore we only use fittings of best European manufacturers. Combination of finest Bosnian wood and high quality fittings of Gretsch-Unitas and Hoppe enable us to make every window in accordance with strictest EU standards.

Personal touch

We want you to have absolute flexibility in choosing of style and combination of colours. That is the reason for which we offer all our joinery in varieties of wood, in all RAL colours and in several different styles. Perfect combination of strong protection and long lasting beauty we achieve by using exclusively water born eco - paints of leading European manufacturers.

Aluminum protection

FUTURA line of windows and balcony doors is additionally protected with high quality extruded aluminum which is very strong and guaranties long lasting time because it is resistant to corrosion and in your interior you will still be able to enjoy beauty and warmth of natural wood.